

Specifications

Model	GTH™ -1056	
Measurements	US	Metric
Maximum lift height	56 ft 10 in	17.32 m
Maximum forward reach	42 ft	12.80 m
A Height, stowed	8 ft 6 in	2.59 m
B Length, stowed (without forks)	21 ft	6.40 m
Width	8 ft 6 in	2.59 m
C Wheelbase	10 ft 8 in	3.25 m
D Ground clearance, center	1 ft 10 in	0.56 m
E Ground clearance, axle	1 ft 6 in	0.46 m
Fork cross section	2.25 x 4 in	57 x 101 mm

Productivity

Maximum lift capacity	10,000 lbs	4,536 kg
Lift capacity at maximum height	4,000 lbs	1,814 kg
Lift capacity at maximum reach	3,000 lbs	1,361 kg
Raise/Lower boom	13/12 sec	
Extend/Retract	16/15 sec	
Frame leveling	10° side to side	
Drive speed	17 mph	27 km/h
Draw bar pull	28,800 lbs	13,063 kg
Turning radius, outside (4WS)	13 ft 3 in	4.04 m
Auxiliary hydraulic flow	2-15 gpm	8-57 lpm
Auxiliary hydraulic pressure	3,200 psi	220 bar
Tires, standard size	14 x 24 in, 12 ply	

Power

Power source	Deutz TCD 3.6 L Tier 4i 121 HP (90.23 kW)*
	Perkins 1204E Tier 4i 124 HP (92.47 kW)
	Perkins 1104E Tier 3 124 HP (92.47 kW)**
Electrical system	System voltage 12 volt
	Alternator 95 amp
	Battery 1000 CCA at 0°F (-18°C)
Hydraulic tank capacity	44 gal / 167 L
Hydraulic system capacity (w/tank)	55 gal / 208 L
Fuel tank capacity	35 gal / 132 L

Weight***

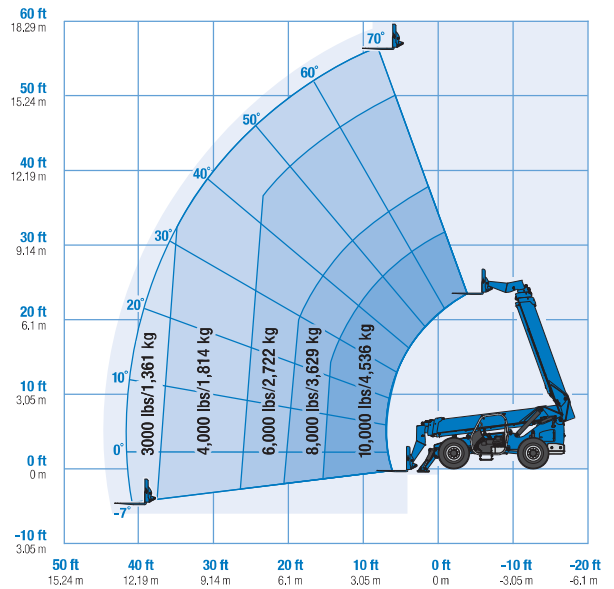
30,000 lbs / 13,608 kg

Standards Compliance

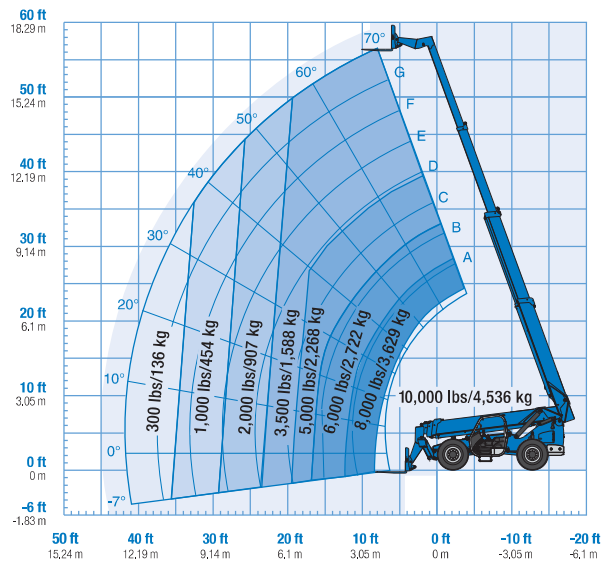
ANSI/ITSDF B56.6, CSA B335

* Also available as Tier 3 in limited regions
 ** Availability limited by region and country standards
 *** Weight will vary depending on options and/or country standards.
 **** Load ratings vary depending on attachment.

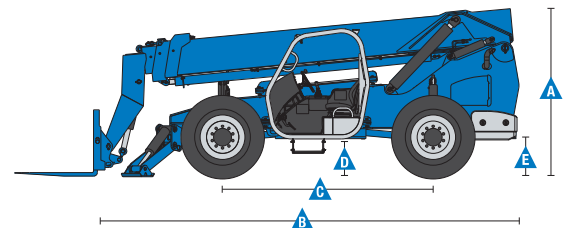
Load Chart GTH™ -1056****



With stabilizers down



With stabilizers up



Features

Standard Features	Options & Accessories	Options & Accessories
<p>Measurements</p> <ul style="list-style-type: none"> • 10,000 lb (4,536 kg) maximum lift capacity • 56 ft 10 in (17.32 m) maximum lift height • 42 ft (12.80 m) maximum reach <p>Productivity</p> <ul style="list-style-type: none"> • Full time 4WD • 4WS • Operator selectable front, crab, coordinated steering modes • Frame leveling 10° side to side • 3-speed forward and reverse powershift transmission • Power assisted steering • Inboard wet disc service brakes • Wet disc spring applied parking brake • 14 x 24 in 12-ply air-filled rough terrain tires • Front axle differential lock • Rear axle stabilization system • Twin axle mounted stabilizers • High efficiency/variable displacement hydraulic pump • ROPS/FOPS canopy (ISO compliant) • Single, multi-function, proportional joystick • Machine level indicator • Full gauge cluster with engine diagnostics • 48 in carriage and pallet forks • Boom angle indicator • Retractable 3 in (8 cm) seatbelt • Left front and rear tire fenders • Reverse motion alarm • Adjustable suspension seat • Auxiliary hydraulic circuit (15 GPM) • Genie manual Quick-Attach™ system 	<p>Productivity</p> <ul style="list-style-type: none"> • Fully enclosed cab (includes full glass, defroster, wiper, washer, right-side sliding window, split door) • Fully enclosed cab air conditioning • Front and top glass • Right-side screen • Dual joystick controls • Flashing beacon • Work lights (2 cab front mounted, 1 back-up, 1 stop/tail) • Road lights (2 cab front mounted, 1 back-up, 2 rear stop/turn/tail) • Auxiliary hydraulic circuit • Fire extinguisher • Fenders (set of 4) <p>Engine Options</p> <ul style="list-style-type: none"> • Deutz TCD 3.6 L Tier 4i 121 HP (90.23 kW)* • Perkins 1204E Tier 4i 124 HP (92.47 kW) • Perkins 1104E Tier 3 124 HP (92.47 kW)** • Engine block heater <p>Tire Options</p> <ul style="list-style-type: none"> • 14 x 24 in 12-ply foam-filled rough terrain tires • Firestone SGG foam-filled tires • Firestone SGG air-filled tires <p>* Also available as Tier 3 in limited regions. ** Availability limited by region and country standards</p>	<p>Attachment Options</p> <ul style="list-style-type: none"> • Carriages - Quick-Attach™ <ul style="list-style-type: none"> - 60 in (1.52 m) rotating carriage (10° from center left and right) - 60 in (1.52 m) wide fork carriage - 72 in (1.83 m) wide fork carriage • Forks <ul style="list-style-type: none"> - 60 in (1.52 m) pallet forks (set of two) 2.25 x 4 x 60 in (.06 x .10 x 1.52 m) - 72 in (1.83 m) pallet forks (set of two) 2.25 x 4 x 72 in (.06 x .10 x 1.83 m) • 14ft variable reach truss boom



Genie United States

18340 NE 76th Street
P.O. Box 97030
Redmond, Washington 98073-9730
Telephone +1 (425) 881-1800
Toll Free in USA/Canada +1 (800)-536-1800
Fax +1 (425) 883-3475

Distributed By: **equip:inc**

Equipinc AWP Sdn Bhd (1077085-A)

31, Jalan Serendah 26/39, i-Parc 2 Seksyen 26,
40400 Shah Alam, Selangor.
T +(603) 5103 0939/ 5103 2685
F +(603) 5103 2839
H/P +(6012) 377 3571 (Zun), +(6012) 602 2310 (Chow)
E awpsales@equip-inc.com

Effective Date: January, 2014. Product specifications and prices are subject to change without notice or obligation. The photographs and/or drawings in this document are for illustrative purposes only. Refer to the appropriate Operator's Manual for instructions on the proper use of this equipment. Failure to follow the appropriate Operator's Manual when using our equipment or to otherwise act irresponsibly may result in serious injury or death. The only warranty applicable to our equipment is the standard written warranty applicable to the particular product and sale and we make no other warranty, express or implied. Products and services listed may be trademarks, service marks or trade names of Terex Corporation and/or their subsidiaries in the USA and many other countries. Genie is a registered trademark of Terex South Dakota, Inc. © 2014 Terex Corporation.